

Two Styles to Meet Your Power Outlet Needs

- **Surface mount:** User mounts unit to a post
- **Pedestal mount:** User mounts with an underground pedestal extension or pad-mounting bracket. (Underground pedestal extension and pad-mounting bracket are sold separately. See accessories **Page 291** for part numbers and options)



Compact Design Available in Certain Configurations for Added Convenience

Standards and Certifications

- UL Standard 231
- UL File Number E163588

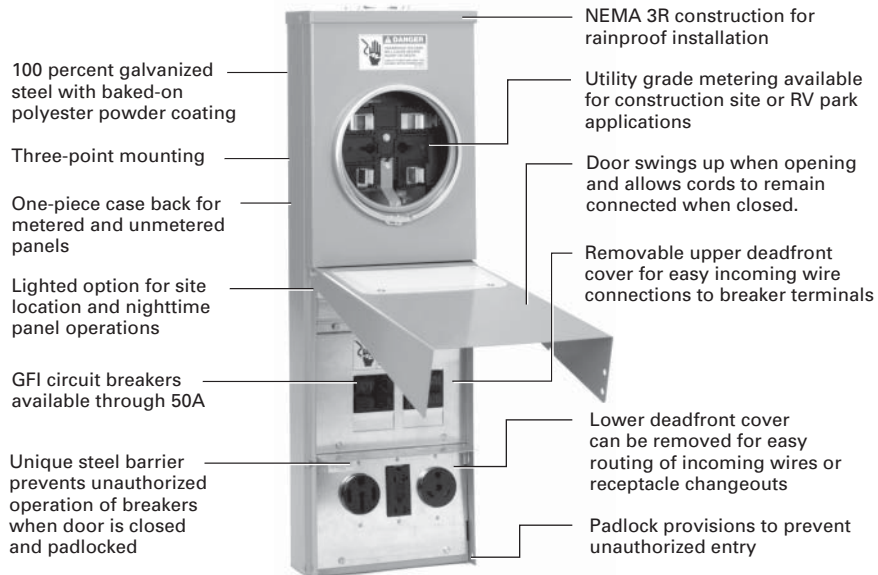
Receptacles conform to NEMA and/or ANSI configurations as specified by the NEC.

Standard Compliance

All power outlet panels for temporary construction site power and RV (recreational vehicle) application shall be UL listed for the U.S. per UL Standard 231, File E163588. Receptacles shall conform to NEMA and/or ANSI configurations as specified by the National Electrical Code (NEC).

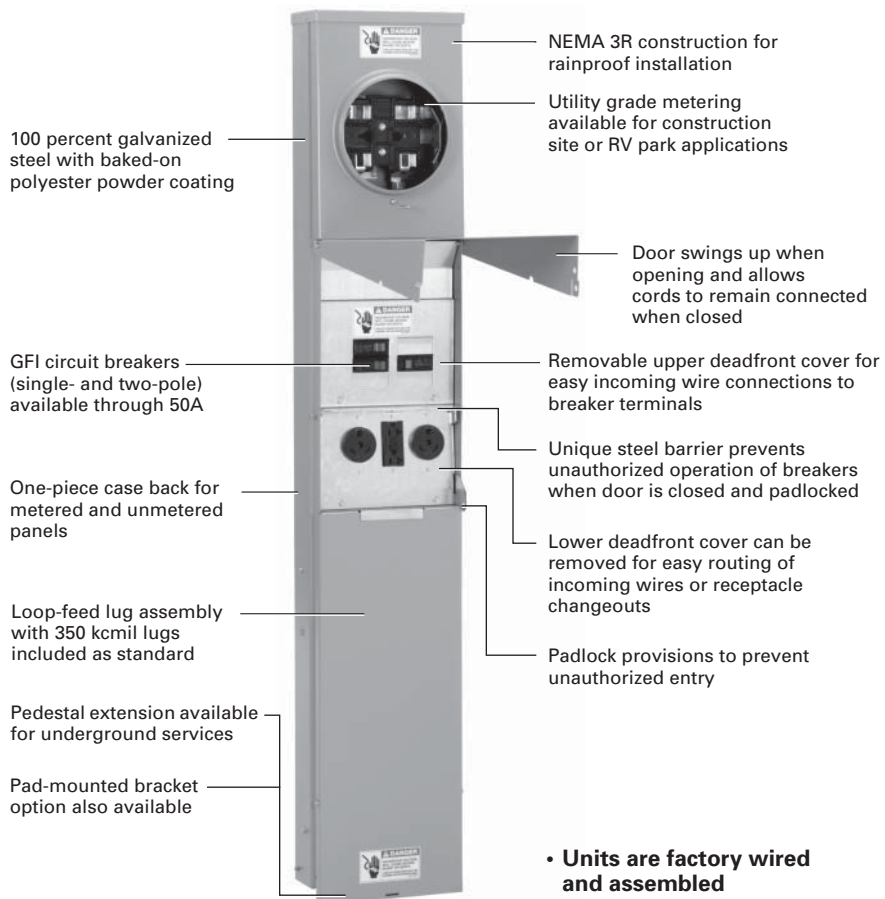


Surface Units

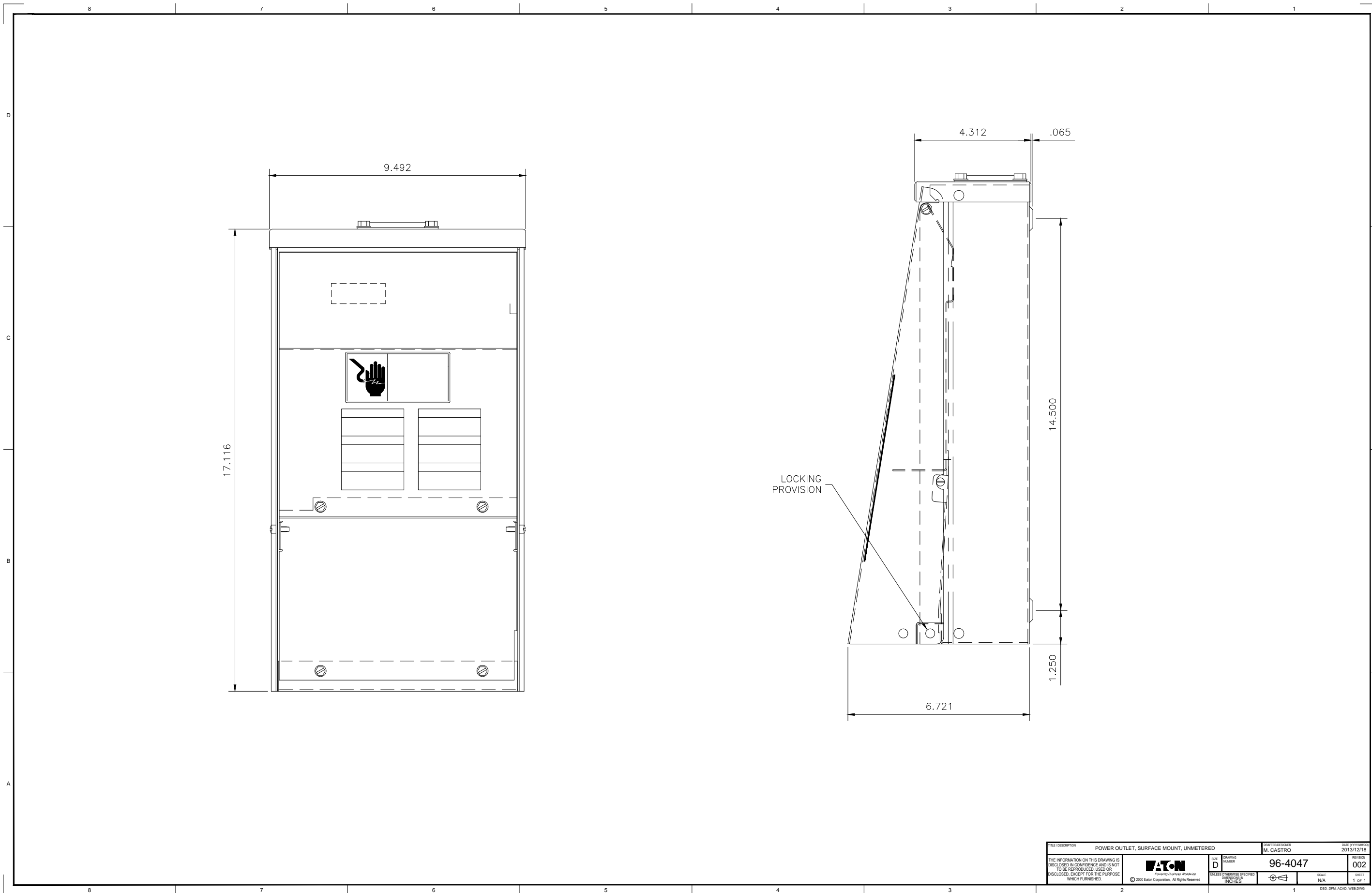


- Metered units available with meter on top or on bottom
- Units are factory wired and assembled

Pedestal Units



- Units are factory wired and assembled



FILE DESCRIPTION POWER OUTLET, SURFACE MOUNT, UNMETERED		DATE (YYYYMMDD) 2013/12/18
DRAWING NUMBER 96-4047		REVISION 002
<small>THE INFORMATION ON THIS DRAWING IS DISCLOSED IN CONFIDENCE AND IS NOT TO BE REPRODUCED, USED OR DISCLOSED, EXCEPT FOR THE PURPOSE WHICH FURNISHED.</small>		<small>UNLESS OTHERWISE SPECIFIED DIMENSIONS IN INCHES</small>
		<small>SCALE N/A</small>
<small>© 2003 Eaton Corporation. All Rights Reserved.</small>		<small>SHEET 1 OF 1</small>



On/I

20

Off/O

Type BR120
Type Q10
2500W @ 240V
Circuit Breaker
UL Type
UL1000 Q100
1 Pole 240V
E997611-002711
© 2000 EATON

On/I

30

Off/O

Type BR120
Type Q10
2500W @ 240V
Circuit Breaker
UL Type
UL1000 Q100
1 Pole 240V
E997611-002711
© 2000 EATON

