

Two Styles to Meet Your Power Outlet Needs

- **Surface mount:** User mounts unit to a post
- **Pedestal mount:** User mounts with an underground pedestal extension or pad-mounting bracket. (Underground pedestal extension and pad-mounting bracket are sold separately. See accessories **Page 291** for part numbers and options)



Compact Design Available in Certain Configurations for Added Convenience

Standards and Certifications

- UL Standard 231
- UL File Number E163588

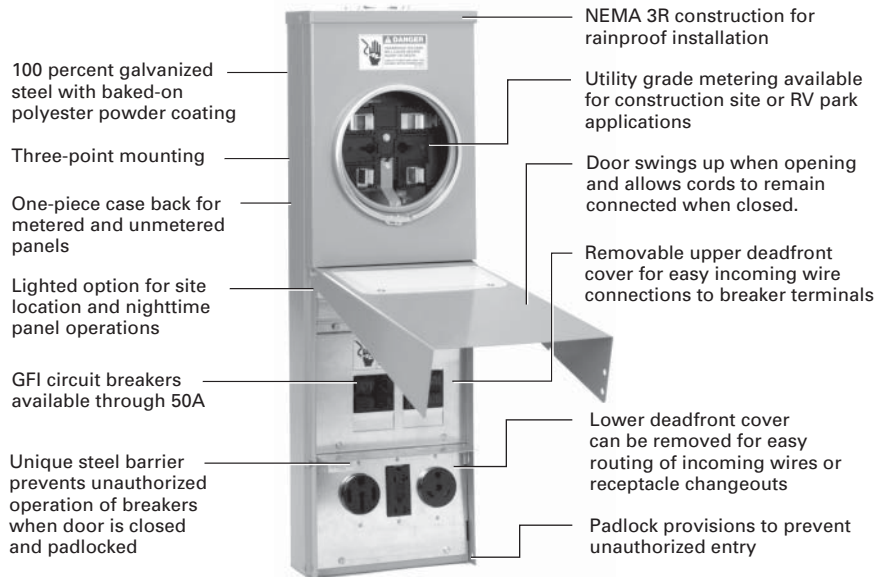
Receptacles conform to NEMA and/or ANSI configurations as specified by the NEC.

Standard Compliance

All power outlet panels for temporary construction site power and RV (recreational vehicle) application shall be UL listed for the U.S. per UL Standard 231, File E163588. Receptacles shall conform to NEMA and/or ANSI configurations as specified by the National Electrical Code (NEC).

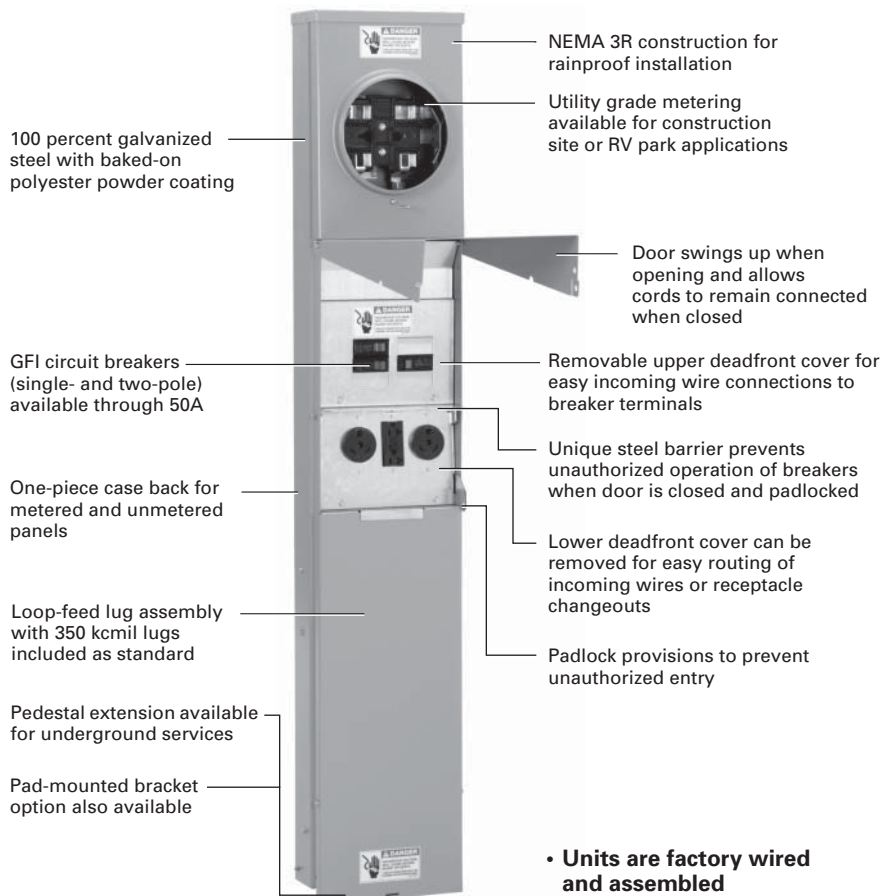


Surface Units

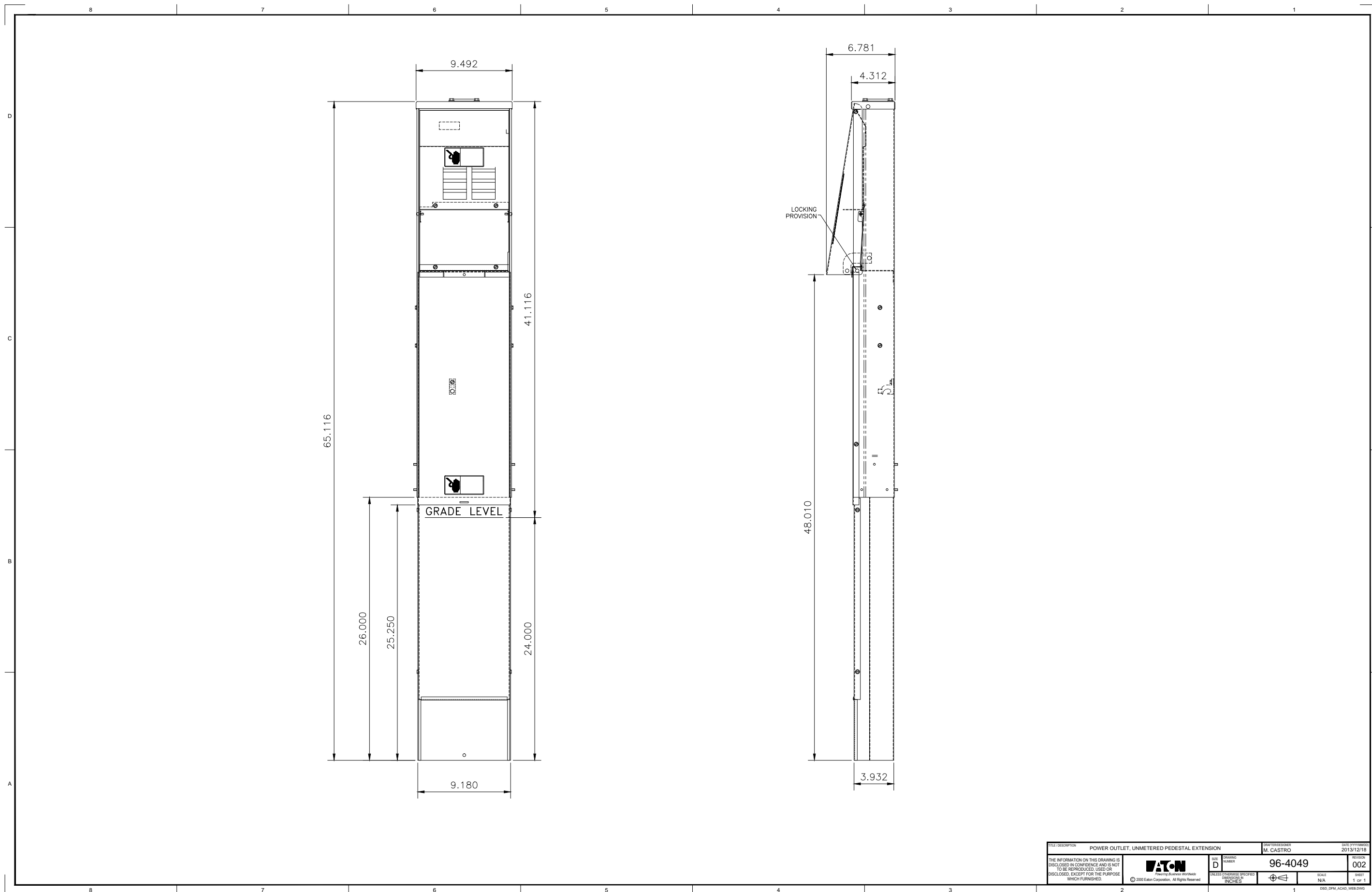



- Metered units available with meter on top or on bottom
- Units are factory wired and assembled

Pedestal Units



- Units are factory wired and assembled



FILE DESCRIPTION POWER OUTLET, UNMETERED PEDESTAL EXTENSION		DRAWING NUMBER 96-4049	DATE (YYYYMMDD) 2013/12/18
THE INFORMATION ON THIS DRAWING IS DISCLOSED IN CONFIDENCE AND IS NOT TO BE REPRODUCED, USED OR DISCLOSED, EXCEPT FOR THE PURPOSE WHICH FURNISHED.		 <small>AT&T A World of Possibilities</small>	REVISION 002
<small>© 2003 Eaton Corporation. All Rights Reserved.</small>		UNLESS OTHERWISE SPECIFIED DIMENSIONS IN INCHES	SCALE N/A SHEET 1 OF 1 <small>DISC.DPM.ACAD_WEB.DWG</small>

